

## 1 Teaching

**Quality first teaching supported by evidence informed CPD for teachers and support staff.**

**Facilitation of 4 x Y6 classes – 14 pupils per class in addition to HLTA support and apprentice.**

**Facilitation of 3 x Y5 classes – 16 per class in addition to HLTA support and apprentice.**

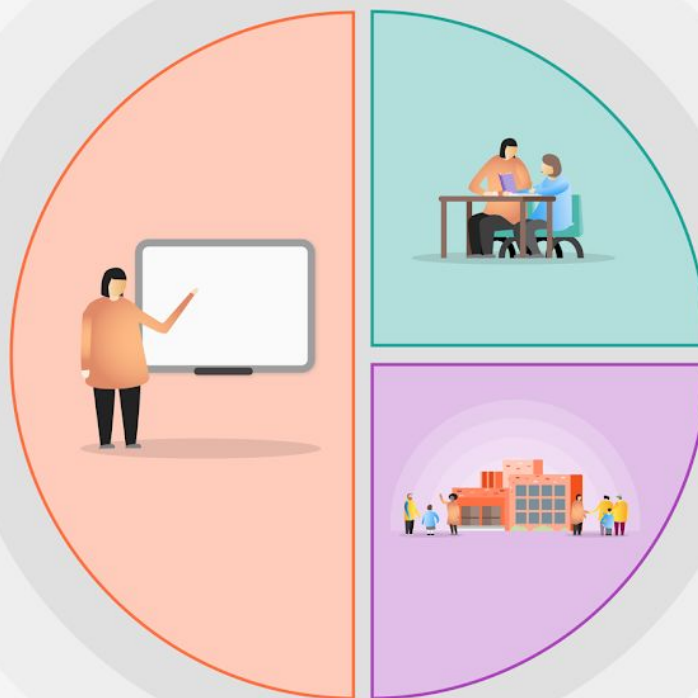
**Whole class reading approach and targeted daily readers, reading incentives, regular assessment pints.**

**Writing – taught through dedicated curriculum linked texts.**

**Development of a maths mastery approach, Early Bird Mathematics.**

**Discrete focuses throughout the wider curriculum to enhance and accelerate progress.**

**Costings: £15,600.00**



## 2 Targeted academic support

**Same day intervention in class – for mathematics and literacy.**

**Intervention led group activities daily to target need**

**Targeted daily readers and writers.**

**Targeted daily wider interventions in class bubbles**

**Costings:£3,000.00**

## 3 Wider strategies

**Family Liaison FTE support throughout the calendar year.**

**Patrol team support within school and community.**

**Targeted social and emotional support pastoral team**

**Daily breakfasts in classrooms for all.**

**Wider curriculum based upon a bespoke BPA approach.**

**School staff utilised at all opportunities rather than supply.**

**Costings: £3,000.00**

**Total Costings: £21,600.00**